



**REGIONAL SPECIALISED METEOROLOGICAL CENTRE-TROPICAL CYCLONES, NEW DELHI**  
**TROPICAL CYCLONE ADVISORY**

**DEMS-RSMC SPECIAL TROPICAL CYCLONES NEW DELHI DATED 11.06.2023**

**FROM: RSMC –TROPICAL CYCLONES, NEW DELHI**

**TO: STORM WARNING CENTRE, NAYPYI TAW (MYANMAR)**  
**STORM WARNING CENTRE, BANGKOK (THAILAND)**  
**STORM WARNING CENTRE, COLOMBO (SRILANKA)**  
**STORM WARNING CENTRE, DHAKA (BANGLADESH)**  
**STORM WARNING CENTRE, KARACHI (PAKISTAN)**  
**METEOROLOGICAL OFFICE, MALE (MALDIVES)**  
**OMAN METEOROLOGICAL DEPARTMENT, MUSCAT (THROUGH RTH JEDDAH)**  
**YEMEN METEOROLOGICAL SERVICES, REPUBLIC OF YEMEN (THROUGH RTH JEDDAH)**  
**NATIONAL CENTRE FOR METEOROLOGY, UAE (THROUGH RTH JEDDAH)**  
**PRESIDENCY OF METEOROLOGY AND ENVIRONMENT, SAUDI ARABIA (THROUGH RTH JEDDAH)**  
**IRAN METEOROLOGICAL ORGANISATION, (THROUGH RTH JEDDAH)**  
**QATAR METEOROLOGICAL DEPARTMENT (THROUGH RTH JEDDAH)**

**TROPICAL CYCLONE ADVISORY NO. 38 FOR NORTH INDIAN OCEAN (THE BAY OF BENGAL AND ARABIAN SEA) VALID FOR NEXT 120 HOURS ISSUED AT 0600 UTC OF 11.06.2023 BASED ON 0300 UTC OF 11.06.2023**

**SUB: VERY SEVERE CYCLONIC STORM “BIPARJOY” (PRONOUNCED AS “BIPORJOY”) INTENSIFIED INTO AN EXTREMELY SEVERE CYCLONIC STORM OVER EASTCENTRAL ARABIAN SEA**

THE EXTREMELY SEVERE CYCLONIC STORM “BIPARJOY” (PRONOUNCED AS “BIPORJOY”) OVER EASTCENTRAL ARABIAN SEA MOVED NORTH-NORTHEASTWARDS WITH A SPEED OF 8 KMPH DURING PAST 6-HOURS AND LAY CENTERED AT 0300 UTC OF TODAY, THE 11TH JUNE, 2023 OVER THE SAME REGION NEAR LATITUDE 18.0°N AND LONGITUDE 67.6°E, ABOUT 560 KM WEST OF MUMBAI (43057), 460 KM SOUTH-SOUTHWEST OF PORBANDAR (42830), 510 KM SOUTH-SOUTHWEST OF DEVBHUMI DWARKA (42731), 600 KM SOUTH-SOUTHWEST OF NALIYA (42631) AND 770 KM SOUTH OF KARACHI (PAKISTAN, 41780).

IT IS VERY LIKELY TO MOVE NEARLY NORTHWARD TILL 14TH MORNING, THEN MOVE NORTH-NORTHEASTWARDS AND CROSS SAURASHTRA & KUTCH AND ADJOINING PAKISTAN COASTS BETWEEN MANDVI (GUJARAT, 42729 ) AND KARACHI (PAKISTAN, 41780) DURING 0600-0900 UTC OF 15TH JUNE AS A VERY SEVERE CYCLONIC STORM WITH MAXIMUM SUSTAINED WIND SPEED OF 125-135 KMPH GUSTING TO 150 KMPH.

## FORECAST TRACK AND INTENSITY ARE GIVEN BELOW:

DATE/TIME(UTC)	POSITION (LAT. °N/ LONG. °E)	MAXIMUM SUSTAINED SURFACE WIND SPEED (KMPH)	CATEGORY OF CYCLONIC DISTURBANCE
11.06.23/0300	18.0/67.6	160-170 Gusting To 190	Extremely Severe Cyclonic Storm
11.06.23/0600	18.2/67.7	165-175 Gusting To 195	Extremely Severe Cyclonic Storm
11.06.23/1200	18.5/67.8	165-175 Gusting To 195	Extremely Severe Cyclonic Storm
11.06.23/1800	18.8/67.8	160-170 Gusting To 190	Extremely Severe Cyclonic Storm
12.06.23/0000	19.1/67.7	155-165 Gusting To 185	Very Severe Cyclonic Storm
12.06.23/1200	19.7/67.5	150-160 Gusting To 180	Very Severe Cyclonic Storm
13.06.23/0000	20.5/67.3	145-155 Gusting To 175	Very Severe Cyclonic Storm
13.06.23/1200	21.2/67.3	140-150 Gusting To 165	Very Severe Cyclonic Storm
14.06.23/0000	21.8/67.4	135-145 Gusting To 160	Very Severe Cyclonic Storm
14.06.23/1200	22.3/67.7	130-140 Gusting To 155	Very Severe Cyclonic Storm
15.06.23/0000	22.9/68.2	125-135 Gusting To 150	Very Severe Cyclonic Storm
15.06.23/1200	23.7/69.1	100-110 Gusting To 120	Severe Cyclonic Storm
16.06.23/0000	24.3/70.1	55-65 Gusting To 75	Deep Depression

AS PER INSAT 3D IMAGERY INTENSITY OF THE SYSTEM IS T 4.5/4.5. ASSOCIATED BROKEN LOW AND MEDIUM CLOUDS WITH EMBEDDED INTENSE TO VERY INTENSE CONVECTION LAY OVER CENTRAL ARABIAN SEA BETWEEN LATITUDE 14.5°N & 19.5°N AND LONGITUDE 63.0°E & 69.0°E. MINIMUM CLOUD TOP TEMPERATURE IS MINUS 93°C.

ASSOCIATED MAXIMUM SUSTAINED WIND SPEED IS 90 KNOTS GUSTING TO 110 KNOTS. THE ESTIMATED CENTRAL PRESSURE IS 966 HPA. SEA CONDITION IS LIKELY TO BE PHENOMENAL OVER EASTCENTRAL AND ADJOINING WESTCENTRAL & NORTHEAST ARABIAN SEA.

### REMARKS:

THE MADDEN JULIAN OSCILLATION (MJO) INDEX IS CURRENTLY IN PHASE 4 WITH AMPLITUDE LESS THAN 1. IT WOULD MOVE ACROSS PHASE 4 DURING NEXT 2 DAYS. THEREAFTER, IT WOULD MOVE ACROSS PHASES 5 AND 6 DURING SUBSEQUENT 3 DAYS. HENCE, MJO IS LIKELY TO SUPPORT THE ENHANCEMENT OF CONVECTIVE ACTIVITY AND CYCLOGENESIS OVER THE ARABIAN SEA DURING THE SAME PERIOD.

SEA SURFACE TEMPERATURE IS AROUND 30-31°C OVER CENTRAL & ADJOINING SOUTH ARABIAN SEA AND DECREASE TO 28-30°C OVER NORTH ARABIAN SEA. THE CYCLONIC STORM "BIPARJOY" IS CURRENTLY IN A VERY FAVOURABLE ENVIROMENT. POSITIVE LOW LEVEL VORTICITY IS AROUND  $300 \times 10^{-6} \text{ S}^{-1}$  TO THE SOUTH-SOUTHWEST OF THE SYSTEM CENTRE, LOW LEVEL CONVERGENCE HAS INCREASED AND IS ABOUT  $50 \times 10^{-5} \text{ S}^{-1}$  TO THE WEST OF THE SYSTEM CENTRE AND UPPER LEVEL DIVERGENCE IS ABOUT  $30 \times 10^{-5} \text{ S}^{-1}$  TO THE SOUTH-SOUTHWEST OF SYSTEM CENTRE. WIND SHEAR IS MODERATE (25-20 KNOTS) OVER SYSTEM AREA AND IS REDUCED TO 15-20 KNOTS ALONG THE FORECAST TRACK.

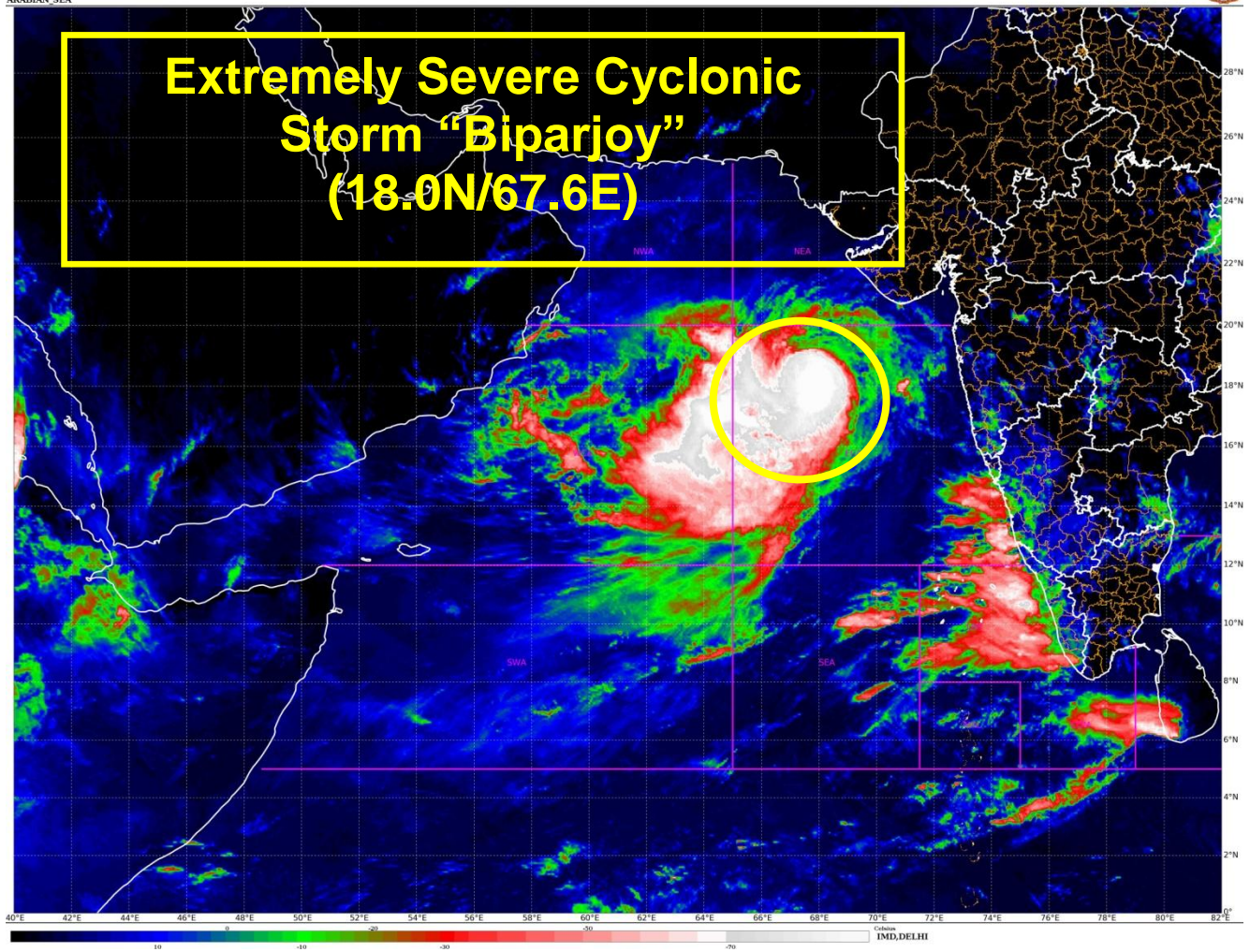
CURRENTLY, THE SYSTEM IS MOVING NEARLY NORTHWARDS UNDER THE INFLUENCE OF 2 ACTIVE ANTICYCLONIC CIRCULATIONS, ONE LOCATED OVER WEST INDIA TO THE EAST-NORTHEAST OF SYSTEM CENTRE AND ANOTHER LOCATED OVER ARABIAN PENINSULAR AND ADJOINING WESTCENTRAL ARABIAN SEA TO THE WEST-NORTHWEST OF SYSTEM CENTRE. DUE TO THE VARIATION IN THE STRENGTH OF THESE ANTICYCLONIC CIRCULATIONS IN THE MIDDLE AND UPPER TROPOSPHERIC LEVELS AND DEPENDING UPON THE DOMINANCE OF ONE OF THESE ANTI CYCLONIC CIRCULATIONS OVER THE PERIOD OF TIME, THE SYSTEM HAS CHANGED PATH IN THE PAST AND ALSO, IT IS LIKELY

TO CHANGE THE DIRECTION OF MOVEMENT ONCE FURTHER DURING THE FORECAST PERIOD. FURTHER, AS THE CYCLONE IS MOVING VERY CLOSE TO THE SOUTH OF THE UPPER TROPOSPHERIC RIDGE IN ASSOCIATION WITH THESE ANTICYCLONIC CIRCULATIONS, THE MOVEMENT OF THE SYSTEM HAS BEEN DOMINANTLY NORTHWARD. WHEN THE SYSTEM WILL APPROACH COAST, IT IS LIKELY TO EXPERIENCE LESSER OCEAN THERMAL ENERGY (40-50 KJ/CM<sup>2</sup>) AND DECREASE IN MIDDLE LEVEL HUMIDITY DUE TO DRY COLD AIR INTRUSION.

LATEST GUIDANCE FROM VARIOUS MODELS INDICATE INTIAL NEAR NORTHWARDS MOVEMENT FOLLOWED BY GRADUAL NORTH-NORTHEASTWARDS MOVEMENT TOWARDS SAURASHTRA & KUTCH AND ADJOINING PAKISTAN COASTS. THE LANDFALL POINT IS VARYING BETWEEN LONGITUDE 66°E-68.5°E DURING 0600-1000 UTC OF 15<sup>TH</sup> JUNE.

CONSIDERING ALL THE ABOVE, IT IS VERY LIKELY TO MOVE NEARLY NORTHWARD TILL 14TH MORNING, THEN MOVE NORTH-NORTHEASTWARDS AND CROSS SAURASHTRA & KUTCH AND ADJOINING PAKISTAN COASTS BETWEEN MANDVI (GUJARAT) AND KARACHI (PAKISTAN) AROUND 0600-0900UTC OF 15TH JUNE AS A VERY SEVERE CYCLONIC STORM WITH MAXIMUM SUSTAINED WIND SPEED OF 125-135 KMPH GUSTING TO 150 KMPH.

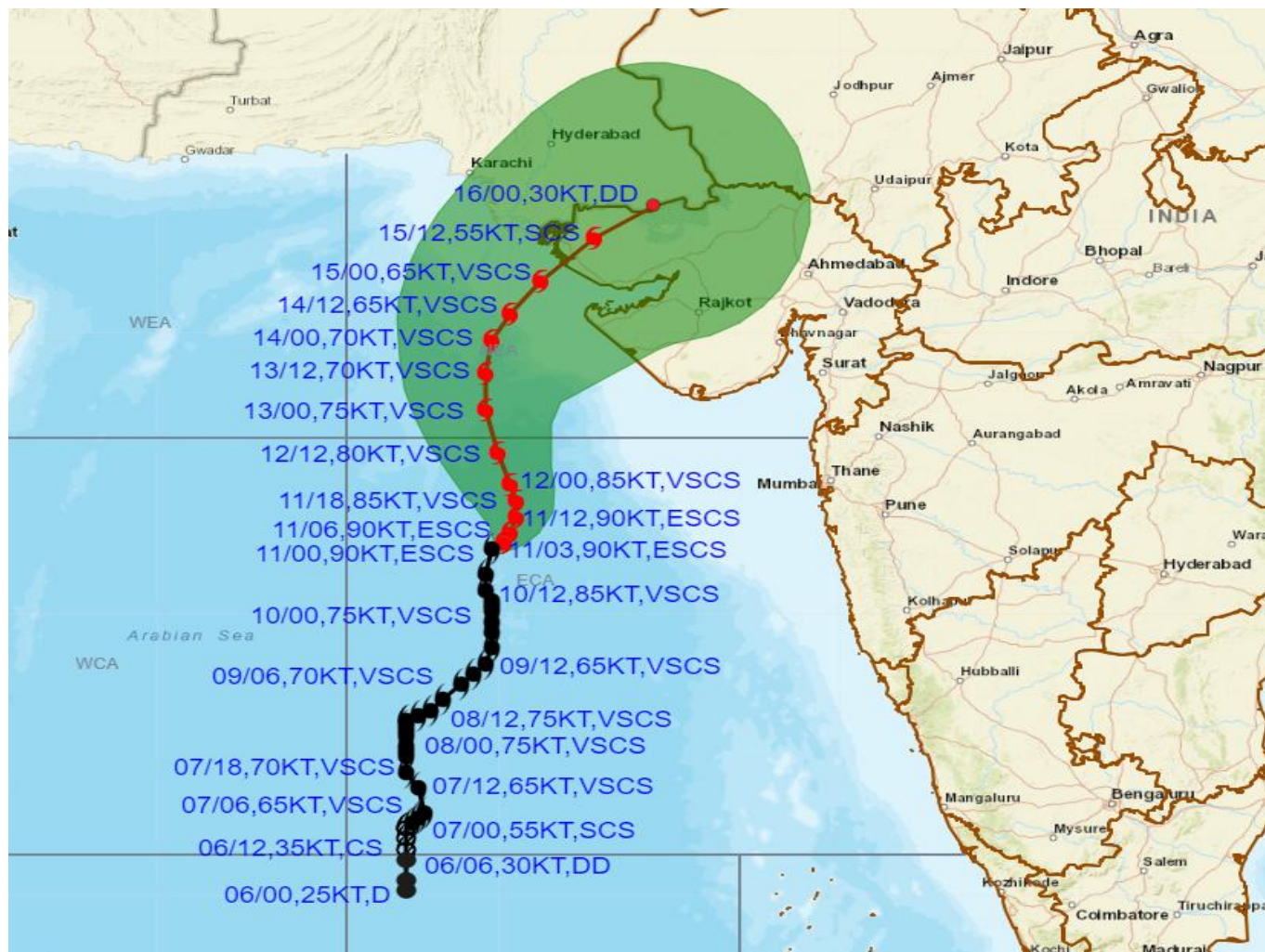
**M. SHARMA  
SCIENTIST-D  
RSMC NEW DELHI**







**OBSERVED AND FORECAST TRACK ALONGWITH CONE OF UNCERTAINTY OF EXTREMELY SEVERE CYCLONIC STORM "BIPARJOY" OVER EASTCENTRAL ARABIAN SEA BASED ON 0300 UTC (0830 IST) OF 11<sup>TH</sup> JUNE 2023.**



DATE/TIME IN UTC  
IST=UTC + 0530  
L: LOW PRESSURE AREA  
WML: WELL MARKED LOW PRESSURE AREA  
D: DEPRESSION (17-27 KT)  
DD: DEEP DEPRESSION (28-33 KT)  
CS: CYCLONIC STORM (34-47 KT)  
SCS: SEVERE CYCLONIC STORM (48-63KT)  
VSCS: VERY SEVERE CYCLONIC STORM (64-89 KT)  
ESCS: EXTREMELY SEVERE CYCLONIC STORM (90-119 KT)  
SuCS: SUPER CYCLONIC STORM ( $\geq 120$  KT)

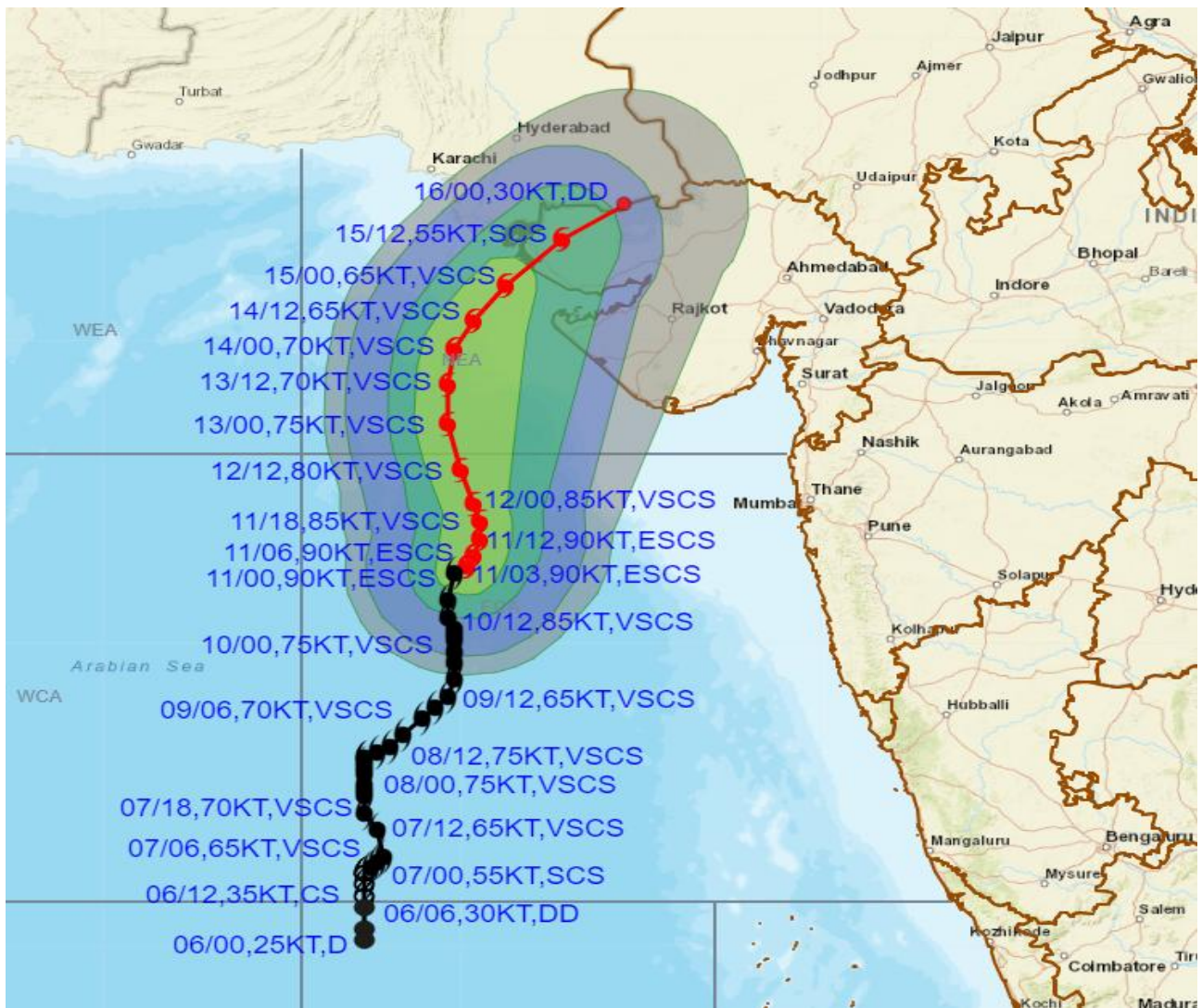
● LESS THAN 34 KT  
● 34-47 KT  
●  $\geq 48$  KT  
■ OBSERVED TRACK  
■ FORECAST TRACK  
▲ CONE OF UNCERTAINTY

Forecast	DISTANCE(KM) AND DIRECTION FROM STATIONS				
Date and Time	PORBANDAR	BOMBAY / COLABA	GOA/PANJIM	KARACHI AIRPORT	DWARKA
12.06.23/0000	350, SW	540, W	770, WNW	640, S	390, SSW
13.06.23/0000	270, WSW	610, WNW	890, NW	490, S	270, SW
14.06.23/0000	230, W	660, WNW	980, NW	340, S	180, WSW
15.06.23/0000	210, NW	660, NW	1020, NW	250, SSE	110, WNW
16.06.23/0000	290, N	660, NNW	1050, NNW	300, ESE	230, NNE

Cloud distribution: (a) Isolated: <25%, Scattered:25-50%, Broken: 51-75%, Solid:>75%, Convection Intensity: (a) Weak: Cloud Top Temperature (CTT) >-25°C, (b) Moderate: CTT: - 25°C to -40°C, (c) Intense: CTT: - 41°C to -70°C and (d) Very Intense: : Less than -70°C  
PROBABILITY OF CYCLOGENESIS (FORMATION OF DEPRESSION): NIL: 0%, LOW: 1-33%, , MODERATE: 34-66% AND HIGH: 67-100%  
This is a guidance Bulletin for WMO/ESCAP Panel Member countries. Visit respective National websites for Country specific Bulletins



**OBSERVED AND FORECAST TRACK ALONGWITH QUADRANT WIND DISTRIBUTION OF EXTREMELY SEVERE CYCLONIC STORM "BIPARJOY" OVER EASTCENTRAL ARABIAN SEA BASED ON 0300 UTC (0830 IST) OF 11<sup>TH</sup> JUNE 2023.**



DATE/TIME IN UTC

IST=UTC + 0530

L: LOW PRESSURE AREA

WML: WELL MARKED LOW PRESSURE AREA

D: DEPRESSION (17-27 KT)

DD: DEEP DEPRESSION (28-33 KT)

CS: CYCLONIC STORM (34-47 KT)

SCS: SEVERE CYCLONIC STORM (48-63 KT)

VSCS: VERY SEVERE CYCLONIC STORM (64-89 KT)

ESCS: EXTREMELY SEVERE CYCLONIC STORM (90-119 KT)

SuCS: SUPER CYCLONIC STORM (≥ 120 KT)

● LESS THAN 34 KT

○ 34-47 KT

● ≥ 48 KT

— OBSERVED TRACK

— FORECAST TRACK

▲ CONE OF UNCERTAINTY

AREA OF MAXIMUM SUSTAINED WIND SPEED:

■ 28-33 KT (52-61 KMPH)

■ 34-49 KT (62-91 KMPH)

■ 50-63 KT (92-117 KMPH)

■ ≥ 64 KT (≥ 118 KMPH)

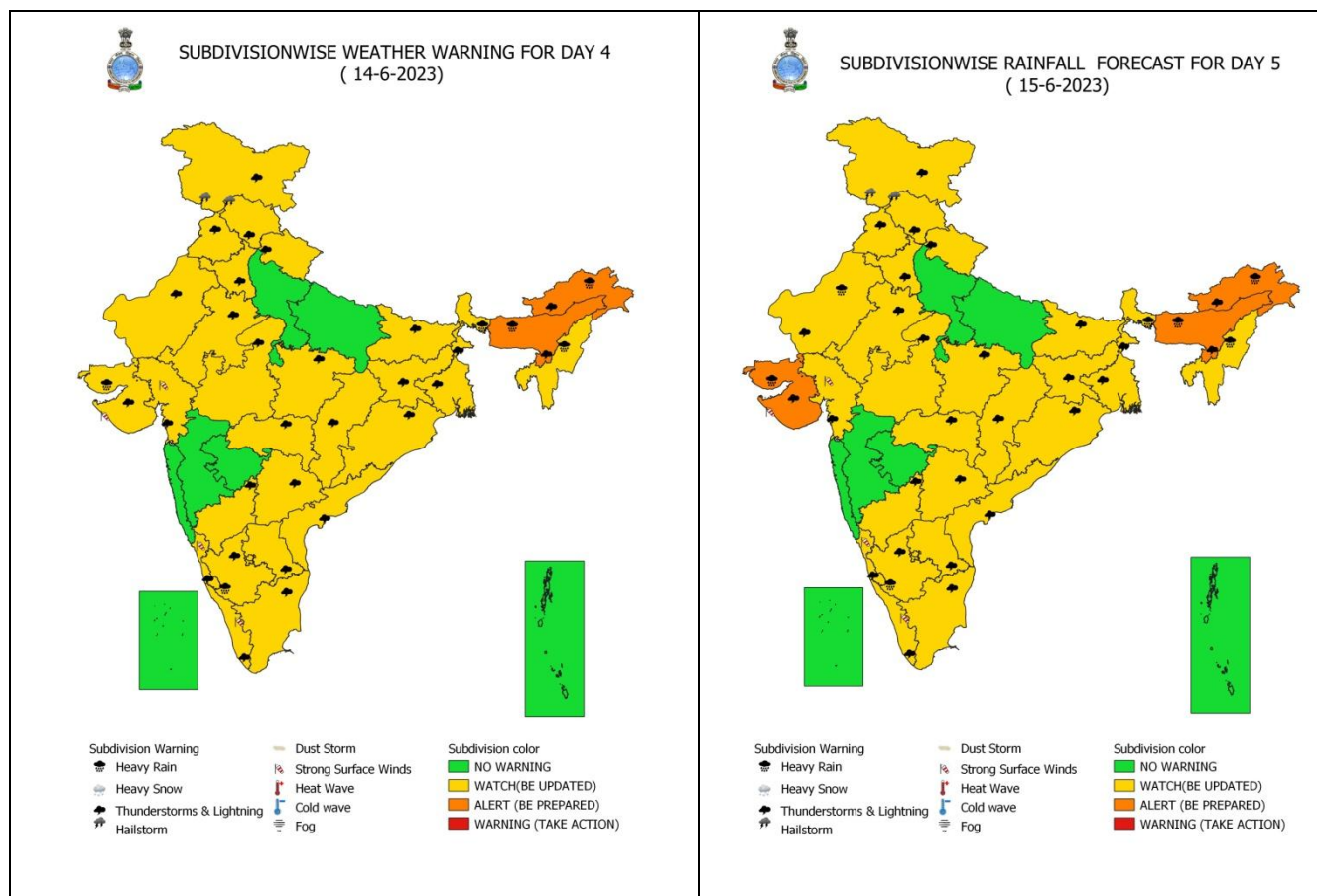
**IMPACT OVER THE SEA**

MSW (knot/kmph)	Impact	Action
28-33 (52-61)	Very rough seas	Total suspension of fishing operations
34-49 (62-91)	High to very high seas	Total suspension of fishing operations
50-63 (92-117)	Very high seas	Total suspension of fishing operations
≥ 64 (≥ 118)	Phenomenal	Total suspension of fishing operations

Cloud distribution: (a) Isolated: <25%, Scattered: 25-50%, Broken: 51-75%, Solid: >75%, Convection Intensity: (a) Weak: Cloud Top Temperature (CTT) >-25°C, (b) Moderate: CTT: - 25°C to -40°C, (c) Intense: CTT: - 41°C to -70°C and (d) Very Intense: : Less than -70°C  
PROBABILITY OF CYCLOGENESIS (FORMATION OF DEPRESSION): NIL: 0%, LOW: 1-33%, , MODERATE: 34-66% AND HIGH: 67-100%  
This is a guidance Bulletin for WMO/ESCAP Panel Member countries. Visit respective National websites for Country specific Bulletins

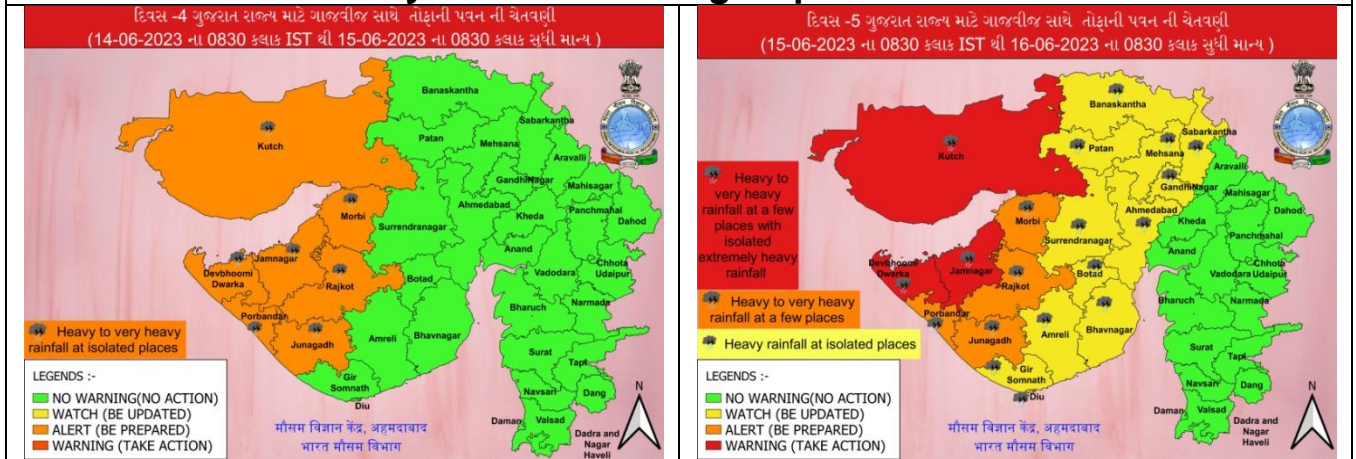


## Heavy Rainfall Warning for 14<sup>th</sup> & 15<sup>th</sup> June 2023

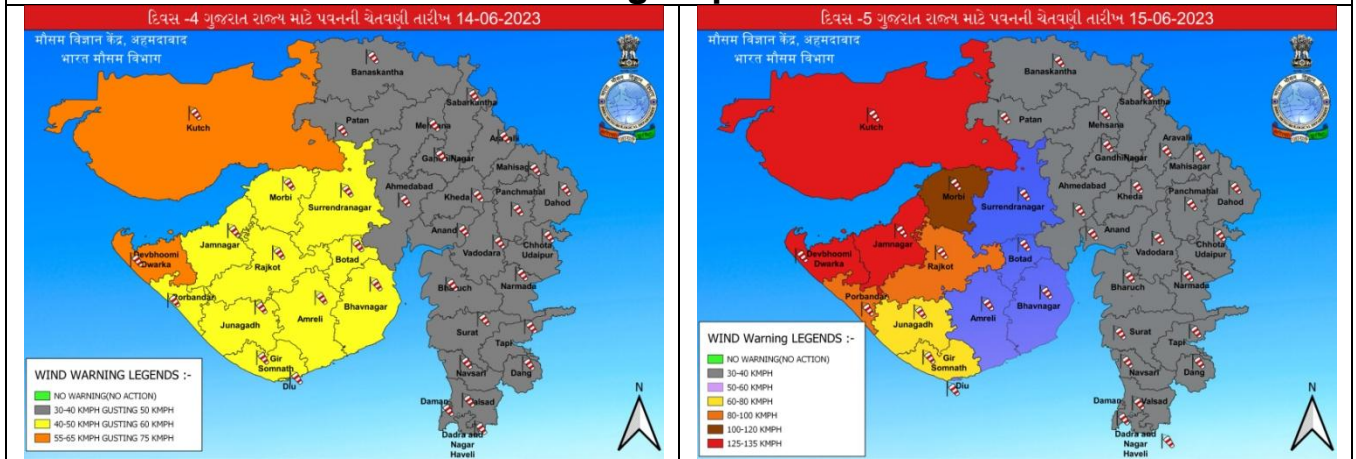


Cloud distribution: (a) Isolated: <25%, Scattered:25-50%, Broken: 51-75%, Solid:>75%, Convection Intensity: (a) Weak: Cloud Top Temperature (CTT) >-25°C, (b) Moderate: CTT: - 25°C to -40°C, (c) Intense: CTT: - 41°C to -70°C and (d) Very Intense: : Less than -70°C  
**PROBABILITY OF CYCLOGENESIS (FORMATION OF DEPRESSION):** NIL: 0%, LOW: 1-33%, , MODERATE: 34-66% AND HIGH: 67-100%  
 This is a guidance Bulletin for WMO/ESCAP Panel Member countries. Visit respective National websites for Country specific Bulletins

## District-wise Heavy Rainfall Warning Maps for 14<sup>th</sup> & 15<sup>th</sup> June 2023



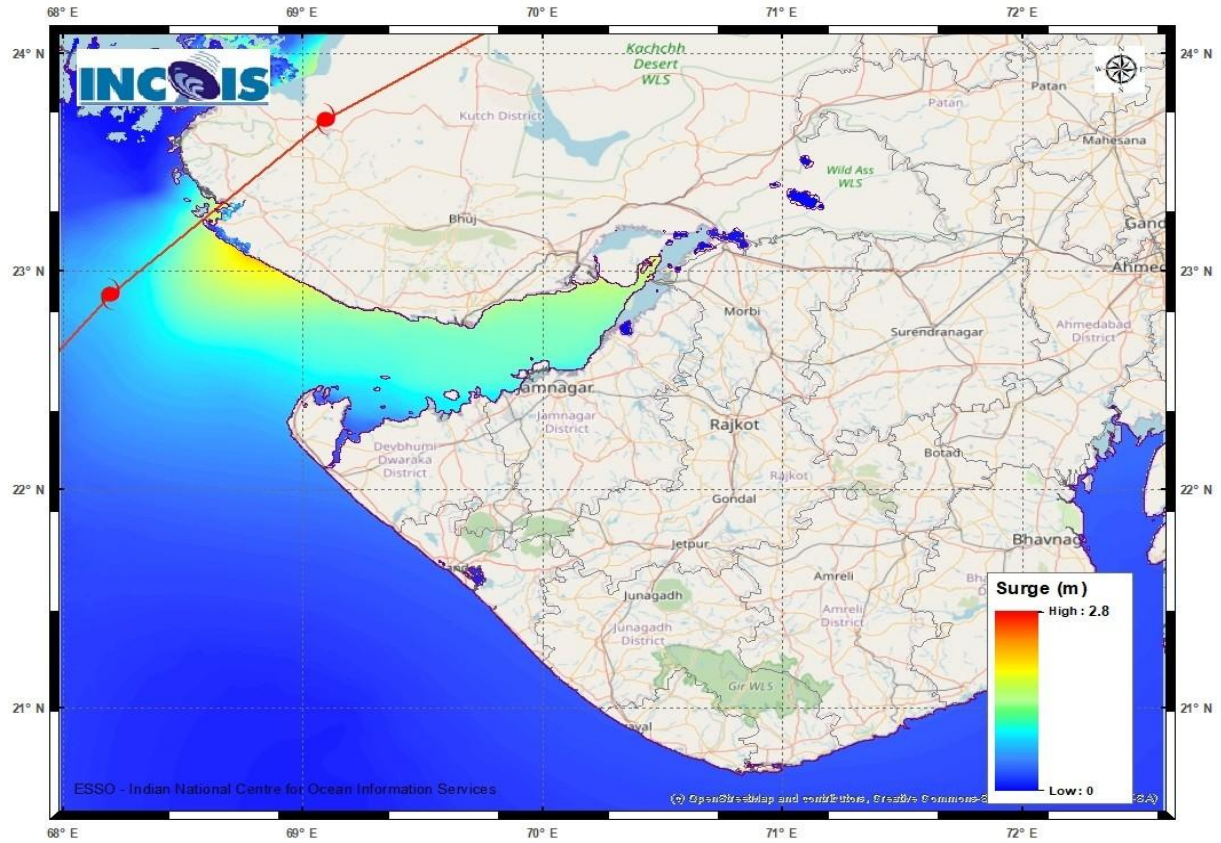
## District-wise Wind Warning Maps for 14<sup>th</sup> & 15<sup>th</sup> June 2023



Cloud distribution: (a) Isolated: <25%, Scattered:25-50%, Broken: 51-75%, Solid:>75%, Convection Intensity: (a) Weak: Cloud Top Temperature (CTT) >-25°C, (b) Moderate: CTT: - 25°C to -40°C, (c) Intense: CTT: - 41°C to -70°C and (d) Very Intense: : Less than -70°C  
PROBABILITY OF CYCLOGENESIS (FORMATION OF DEPRESSION): NIL: 0%, LOW: 1-33%, MODERATE: 34-66% AND HIGH: 67-100%  
This is a guidance Bulletin for WMO/ESCAP Panel Member countries. Visit respective National websites for Country specific Bulletins

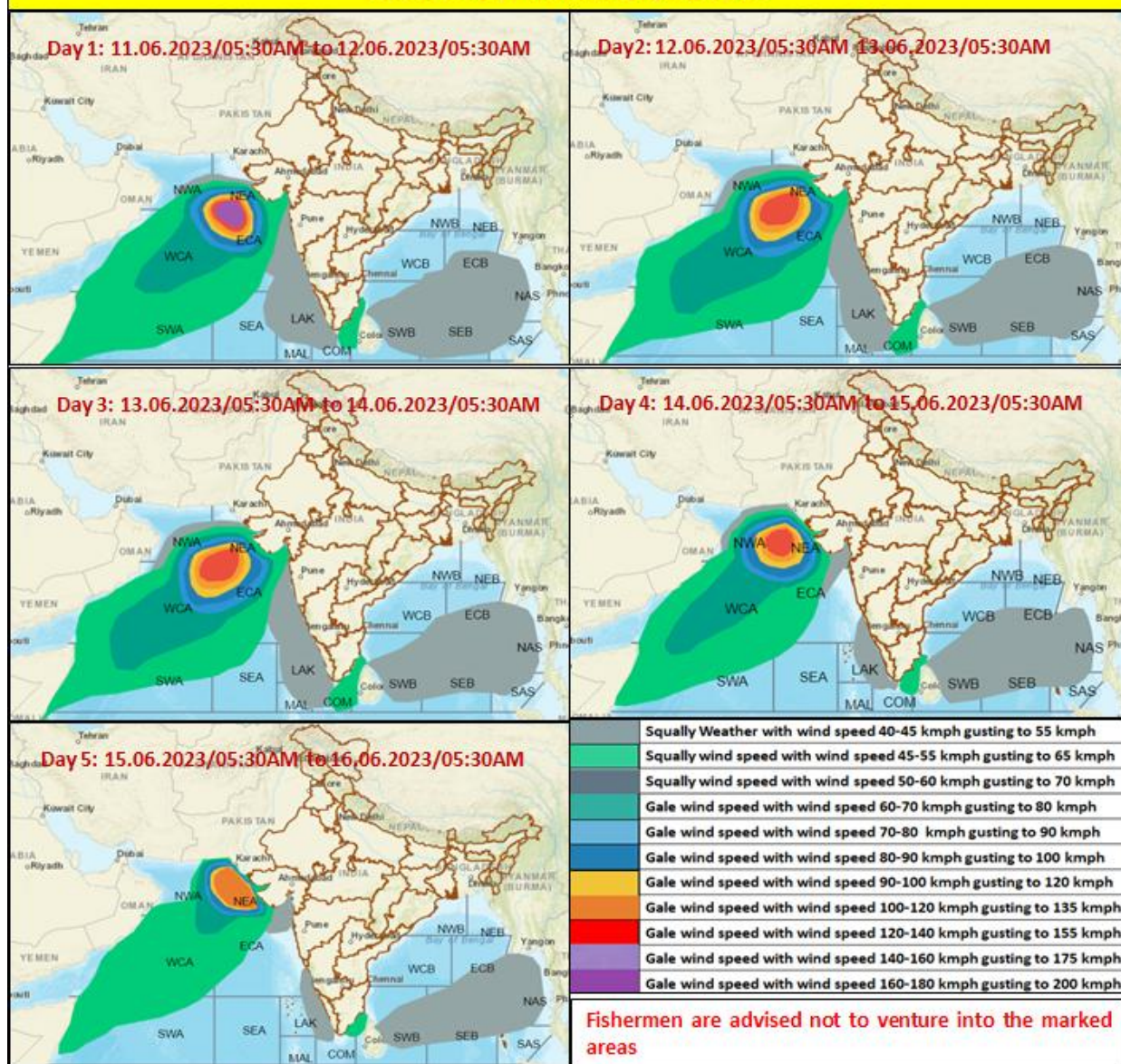


## Storm Surge Warning Map based on Forecast Track



Cloud distribution: (a) Isolated: <25%, Scattered: 25-50%, Broken: 51-75%, Solid: >75%, Convection Intensity: (a) Weak: Cloud Top Temperature (CTT) >-25°C, (b) Moderate: CTT: - 25°C to -40°C, (c) Intense: CTT: - 41°C to -70°C and (d) Very Intense: : Less than -70°C  
 PROBABILITY OF CYCLOGENESIS (FORMATION OF DEPRESSION): NIL: 0%, LOW: 1-33%, , MODERATE: 34-66% AND HIGH: 67-100%  
 This is a guidance Bulletin for WMO/ESCAP Panel Member countries. Visit respective National websites for Country specific Bulletins

## Fishermen warning graphics



Cloud distribution: (a) Isolated: <25%, Scattered: 25-50%, Broken: 51-75%, Solid: >75%, Convection Intensity: (a) Weak: Cloud Top Temperature (CTT) >25°C, (b) Moderate: CTT: - 25°C to -40°C, (c) Intense: CTT: - 41°C to -70°C and (d) Very Intense: : Less than -70°C  
**PROBABILITY OF CYCLOGENESIS (FORMATION OF DEPRESSION):** NIL: 0%, LOW: 1-33%, , MODERATE: 34-66% AND HIGH: 67-100%  
 This is a guidance Bulletin for WMO/ESCAP Panel Member countries. Visit respective National websites for Country specific Bulletins